

## $\beta$ -catenin Mouse mAb

**Cat. QYA10736**

### **Background**

The catenins,  $\alpha$ ,  $\beta$  and  $\gamma$ , are proteins which bind to the highly conserved, intracellular cytoplasmic tail of E-cadherin. Together, the catenin/cadherin complexes play an important role mediating cellular adhesion.  $\alpha$ -catenin was initially described as an E-cadherin associated protein, and since has been shown to associate with other members of the cadherin family, such as N-cadherin and P-cadherin.  $\beta$ -catenin associates with the cytoplasmic portion of E-cadherin, which is necessary for the function of E-cadherin as an adhesion molecule.  $\beta$ -catenin has also been found in complexes with the tumor suppressor protein APC.  $\gamma$ -catenin, also known as plakoglobin, binds with  $\alpha$ -catenin and N-cadherin. It has been shown that the transmembrane phosphatase PTP $\mu$  associates with catenin/cadherin complexes and may regulate complex signaling.

### **Chromosomal Location**

Genetic locus: CTNNB1 (human) mapping to 3p22.1; Ctnnb1 (mouse) mapping to 9 F4.

### **Source**

$\beta$ -catenin mouse monoclonal antibody is produced by immunizing animals with the C-terminal of human  $\beta$ -catenin protein. The antibody was affinity-purified by affinity-chromatography using specific immunogen.

### **Product**

Each vial contains 100 $\mu$ g mouse IgG diluted in 100 $\mu$ l of PBS pH7.4, containing 1mg/ml BSA, 0.02% sodium azide and 50% glycerol. The antibody concentration is 1mg/ml.

### **Specificity**

The antibody detects endogenous  $\beta$ -catenin proteins.

### **Applications and Suggested Working Concentration**

WB: 1:1000

IF: 1:200

IHC: 1:200

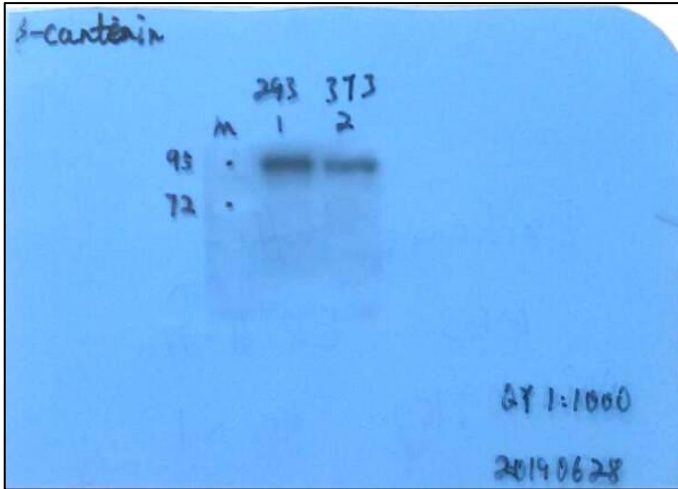
### **Storage**

Storage at -20°C. Do not aliquot the antibody. Stable for one year from the date of shipment.

### **Research Use**

For research use only, not for use in diagnostic procedures.

Data



Western blot analysis:

1.293 2.3T3

Antibody diluted at 1:1000

## β-Catenin Monoclonal Antibody(13C6)

<b>Catalog No.</b>	QYA10736
<b>Size.</b>	100ug
<b>Gene Name.</b>	CTNNB1
<b>Protein Name.</b>	Catenin beta-1
<b>Source.</b>	Mouse
<b>Immunogen.</b>	Synthetic Peptide of β-Catenin
<b>Purification.</b>	The antibody was affinity-purified from mouse ascites by affinity-chromatography using specific immunogen.
<b>Specificity.</b>	The antibody detects endogenous β-Catenin proteins.
<b>Formulation.</b>	PBS, pH 7.4, containing 0.02% sodium azide and 50% Glycerol.
<b>Concentration.</b>	1 mg/ml
<b>Storage / Stability.</b>	-20°C/1 year
<b>Human Gene ID.</b>	1499
<b>Human Swiss-Prot No.</b>	P35222
<b>Mouse Gene ID</b>	12387
<b>Mouse Swiss-Prot No.</b>	Q02248
<b>Rat Gene ID</b>	84353
<b>Rat Swiss-Prot No.</b>	Q9WU82
<b>Reactivity.</b>	Human, Rat
<b>Applications.</b>	WB, IF, IHC
<b>Predicted band (KDa)</b>	87
<b>Observed band (KDa)</b>	94
<b>Dilution.</b>	WB: 1:1000 IF: 1:200 IHC: 1:200
<b>Other Name</b>	CTNNB1; CTNNB; OK/SW-cl.35; Catenin beta-1; Beta-catenin