

# $\beta$ -Tubulin Mouse mAb

**Cat. QYA10738A**

## **Background**

This gene encodes a class III member of the beta tubulin protein family. Beta tubulins are one of two core protein families (alpha and beta tubulins) that heterodimerize and assemble to form microtubules. This protein is primarily expressed in neurons and may be involved in neurogenesis and axon guidance and maintenance. Mutations in this gene are the cause of congenital fibrosis of the extraocular muscles type 3. Alternate splicing results in multiple transcript variants. A pseudogene of this gene is found on chromosome 6.

## **Source**

$\beta$ -tubulin mouse monoclonal antibody is produced by immunizing animals with the internal region of human  $\beta$ -tubulin protein. The antibody was affinity-purified by affinity-chromatography using specific immunogen.

## **Product**

Each vial contains 100ug mouse IgG diluted in 100ul of PBS pH7.4 containing 0.02% sodium azide and 50% glycerol. The antibody concentration is 1mg/ml.

## **Specificity**

The antibody detects endogenous  $\beta$ -tubulin proteins.

## **Applications and Suggested Working Concentration**

WB: 1:5000-1:10000

IF: 1:200

IHC: 1:200

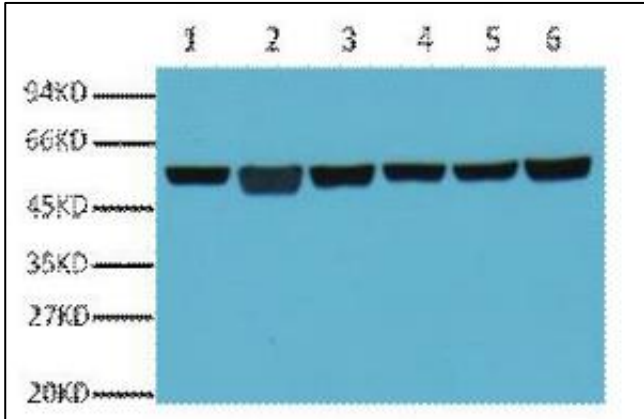
## **Storage**

Storage at -20°C. Do not aliquot the antibody. Stable for one year from the date of shipment.

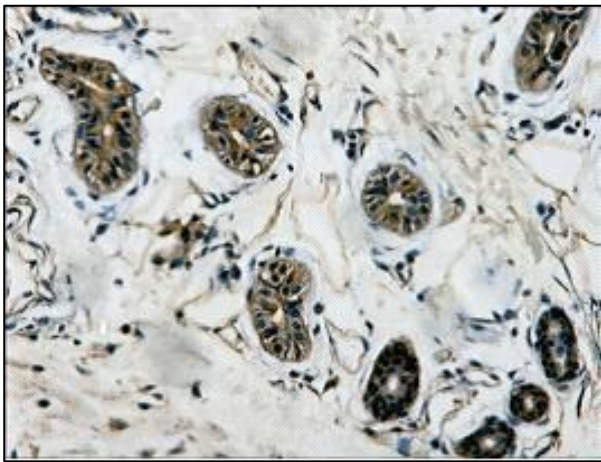
## **Research Use**

For research use only, not for use in diagnostic procedures.

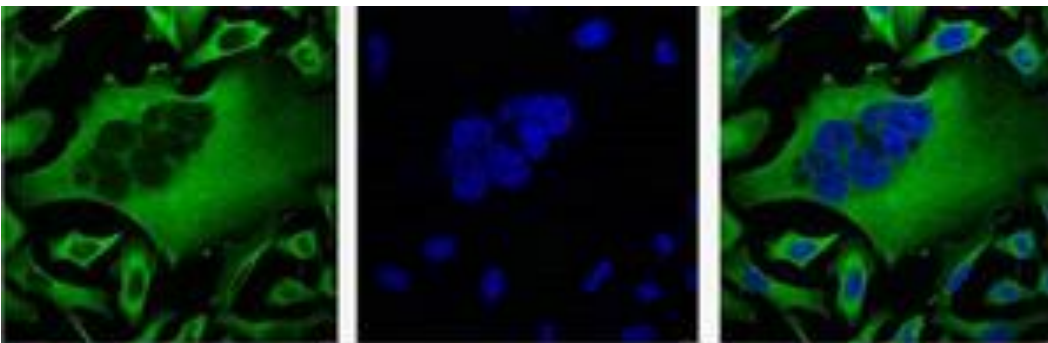
Data



Western blot analysis 1.A549 2.Rat brain 3. Mouse brain 4. Chicken lung 5.Rabbit testis 6. Sheep muscle. Antibody was diluted at 1:5000.



IHC staining of human colon tissue. Antibody was diluted at 1:200.



IF analysis of Hela with  $\beta$ -tubulin (left) and DAPI (right). Antibody was diluted at 1:200.

## β-tubulin Mouse mAb

<b>Catalog No.</b>	QYA10738A
<b>Size.</b>	100ug
<b>Gene Name.</b>	TUBB3
<b>Protein Name.</b>	Tubulin beta-3 chain
<b>Source.</b>	Mouse
<b>Immunogen.</b>	Synthesized peptide
<b>Purification.</b>	The antibody was affinity-purified from mouse antiserum by affinity-chromatography using specific immunogen.
<b>Specificity.</b>	The antibody detects endogenous β-tubulin protein.
<b>Formulation.</b>	PBS, pH 7.4, containing 0.02% sodium azide and 50% Glycerol.
<b>Concentration.</b>	1 mg/ml
<b>Storage / Stability.</b>	-20°C/1 year
<b>Human Gene ID.</b>	10381
<b>Human Swiss-Prot No.</b>	Q13509
<b>Mouse Gene ID</b>	22152
<b>Mouse Swiss-Prot No.</b>	Q9ERD7
<b>Rat Gene ID</b>	246118
<b>Rat Swiss-Prot No.</b>	Q4QRB4
<b>Reactivity.</b>	H, R, M, Mk, Dg, Ch, Hm, Rb, Sh, Insect, Yeast
<b>Applications.</b>	WB, IF, IHC
<b>Predicted band (Da)</b>	50433
<b>Observed band (KDa)</b>	55
<b>Dilution.</b>	WB:1:5000, IHC:1:200, IF:1:200
<b>Other name.</b>	TUBB3; TUBB4; Tubulin beta-3 chain; Tubulin beta-4 chain; Tubulin beta-III